



Tech Guide

Eagle XCO – Gold | Eagle MTB Park

Version 1 | Published 5 April 2022





CONTENTS

EVENT DETAILS	3
DATE & TIME	3
EVENT DESCRIPTION	3
CONTACT DETAILS	4
EVENT VILLAGE	4
EVENT SCHEDULE	5
POSTPONEMENT	6
INSURANCE	6
ENTRY & SIGN ON	6
COURSE MAPS	7
RACE CATEGORIES	8
MEDALS / PRIZES	8
PUBLIC HEALTH & SAFETY	9
PUBLIC HEALTH	9
FOOD & BEVERAGES	9
SHELTER	9
AMENITIES	9
WASTE MANAGEMENT	9
PUBLIC SAFETY	9
COVID-19 MANAGEMENT	9
INCIDENT MANAGEMENT	9
ADDITIONAL INFORMATION	9
FIRST AID/MEDICAL SERVICES	10
WATER/ HYDRATION	10
PHOTOGRAPHERS	10
RACE TIMERS	10
ANTI-DOPING TESTING	10
COMMUNICATIONS	10
ACCOMMODATION AND LOCAL AMENITIES	10

Event Details

Date & Time

Event Dates:

Competition will be **Saturday 23 and Sunday 24 April 2022**

Official Practice will be available **Friday 22 April 2022 (Saturday course) and Saturday 23 April (Sunday course)**

Event Times: The current Event Schedule is provided in Appendix B.

Event Description

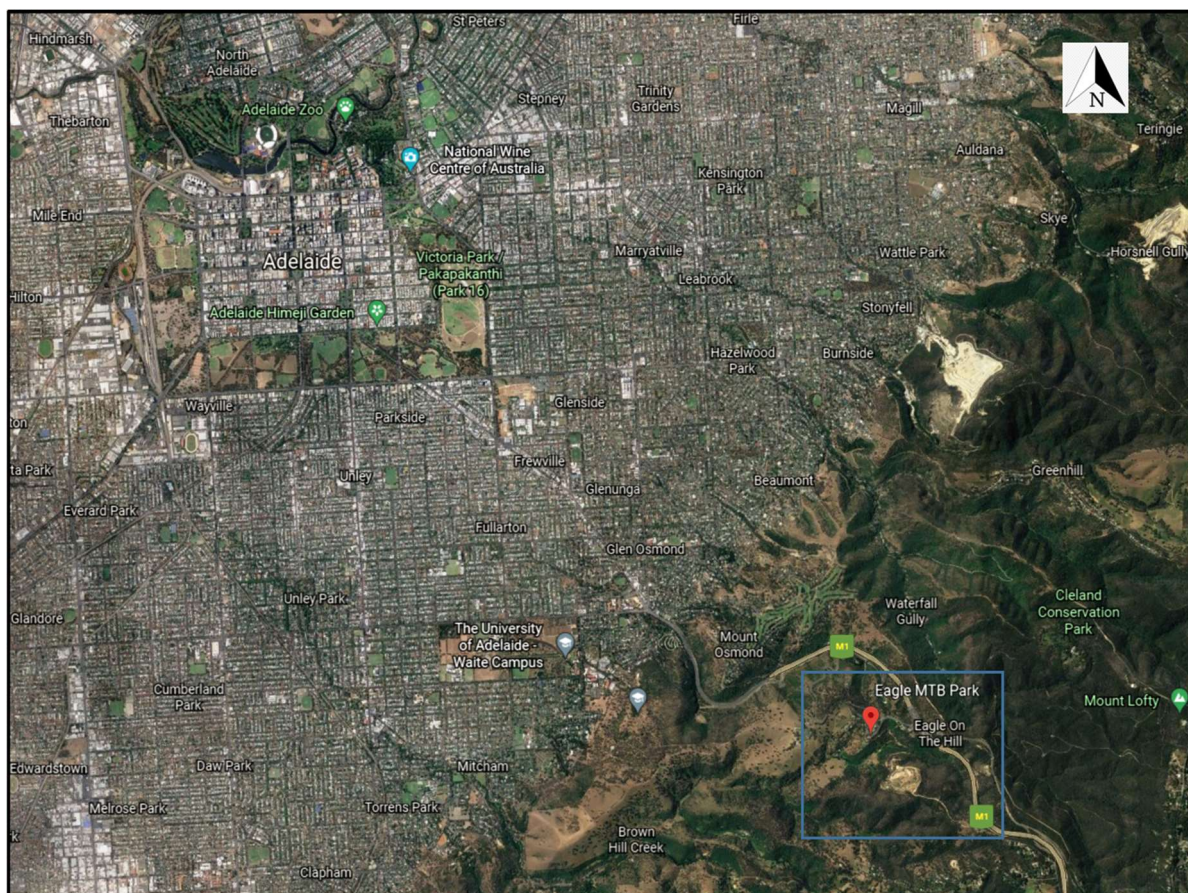
Adelaide Mountain Bike Club (AMBC) is hosting the **Adelaide XCO**.

<http://ambc.asn.au/adelaide-xco/>

This event will be a Gold level (National Cup) and UCI Category 2 event and will form a round of the UCI Junior World Series. The event will be conducted under UCI Regulations with the guidance of the [AusCycling Technical Regulations](#).

Event Address: Eagle MTB Park – Mt Barker Rd, Leawood Gardens, SA

Venue Details: Located within Eagle MTB Park. Entry via Mt Barker Road



Contact Details

Race Director

Kevin Pullen

racedirector@ambc.asn.au

Club Contact

James Irving

president@ambc.asn.au

AMBC Club Mobile

0408 840 610

AMBC In Case of Emergency (ICE) Mobile

0439 288 334

Entry & Timing Queries

P'An-Tau Jiricek-Scott

timing@ambc.asn.au

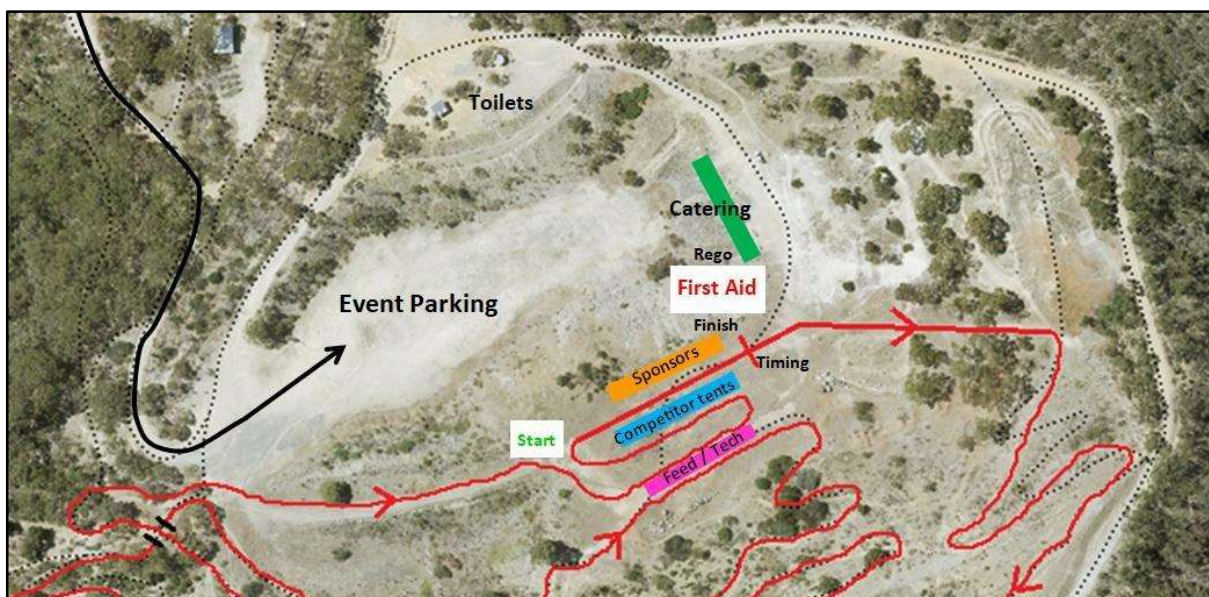
Event Village

Location: The event village is located in the centre of the park on the mezzanine level. Access via the main gate, Leawood Gardens and unsealed road within the park.

Car Parking: Car parking will be available within the park near the event village. Signage will be in place.

Rider Transport: There will be no shuttle transport provided during the racing.

Sign on: Event sign on will be onsite at the event village and will be open as outlined in the event schedule (Appendix B)



Event Schedule

Friday 22nd April 2022	
Sign On	12.30pm - 4.30pm
Official course practice (Saturday course only)	1.00pm - 5.00pm
Saturday 23rd April 2022 - Adelaide XCO (Gold) Race 1	
Sign On	7.30am - 12.00pm
Race 1 MM5+, U17M, U15M, U13M	8.30am
Presentations - Race 1	
Race 2 Elite W, U19W (Junior), MW 1-4, Expert W, U17W, U15W, MW5+, U13W, EBW	10.30am
Presentations - Race 2	
Race 3 Elite M, U19M (Junior), MM1-4, Expert M, EBM	12.30pm
Presentations - Race 3	
Official course practice (Sunday course only)	2.30pm - 5.00pm
Sunday 24th April 2022 - Adelaide XCO (Gold) Race 2	
Sign On	7.30am - 12.00pm
Race 1 MM5+, U17M, U15M, U13M	8.30am
Presentations - Race 1	
Race 2 Elite W, U19W (Junior), MW 1-4, Expert W, U17W, U15W, MW5+, U13W, EBW	10.30am
Presentations - Race 2	
Race 3 Elite M, U19M (Junior), MM1-4, Expert M, EBM	12.30pm
Presentations - Race 3	

Postponement

In the case of the local emergency authority issuing a fire or weather warning which requires that the event location is to be evacuated, or SA Health imposing COVID restrictions preventing the event proceeding on the planned dates, then all event activities will be postponed to a date agreed by the event organisers.

Should such an issue arise, the Event Host will issue an advice at least one day prior to postponement or as soon as practically possible.

Insurance

Both public liability and rider insurance will be provided by AusCycling's standard insurance policies. Current AusCycling Race license is a minimum requirement for entry.

Entry & Sign On

Participants are able to enter races in the event through AusCycling Events Portal:

<https://events.auscycling.org.au/event-registration/individual/events/456>

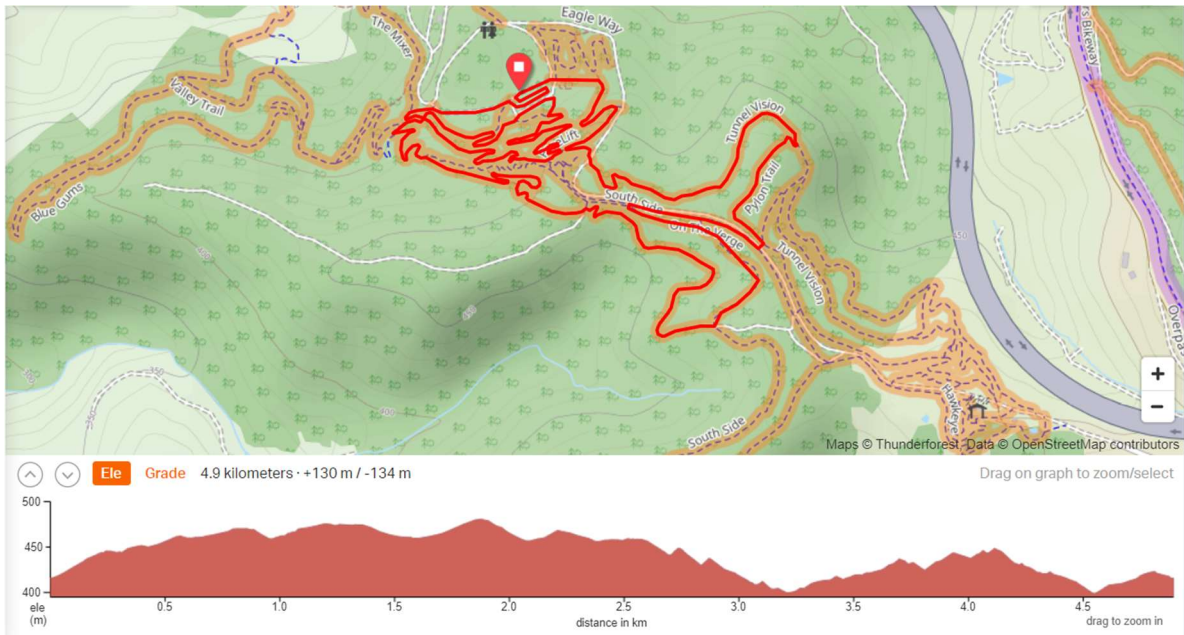
There will be no on the day entries. The operation hours of event sign on are outlined in the Event Schedule above. Sign on will also be utilised for the distribution of race plates.



Course Maps

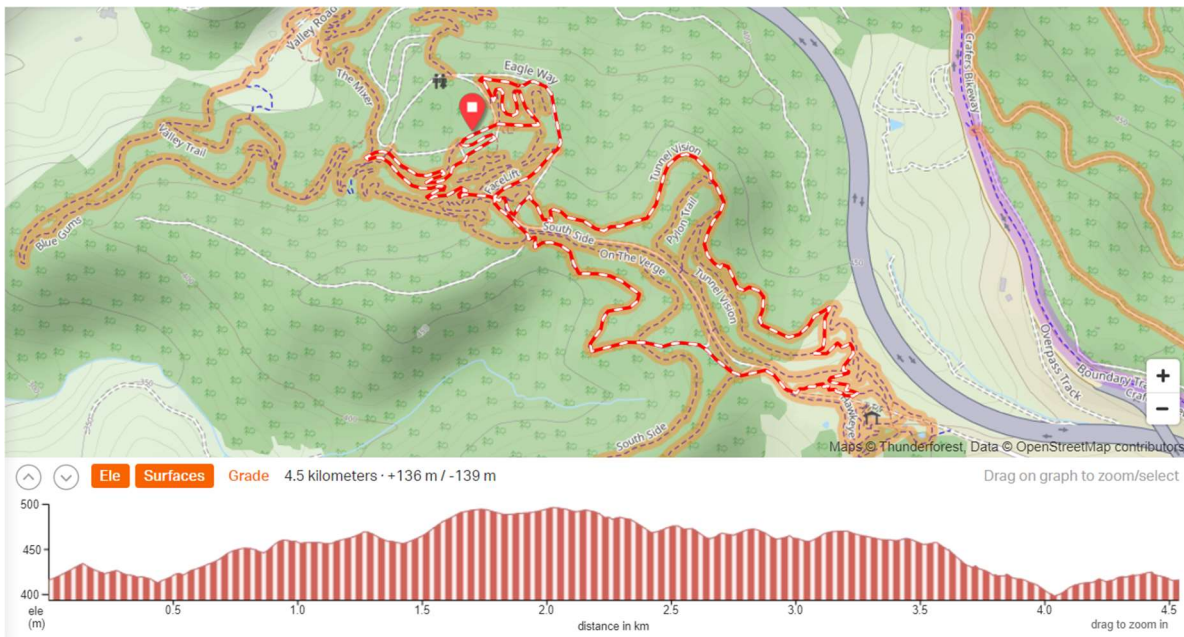
Saturday - Race 1 proposed course

<https://ridewithgps.com/routes/38516778>



Sunday - Race 2 proposed course

<https://ridewithgps.com/routes/38667481>



Race Categories

Category	Code	Age	Laps*
Elite Men/Women	ME/WE	19+	6/5
Expert Men/Women	MX/WX	19-29	4/3
Under 23 Men/Women	M23/W23	19-22	6/5
Junior Men/Women (U19)	MJ/WJ	17-18	5/4
Under 17 Men/Women	M17/W17	15-16	4/3
Under 15 Men/Women	M15/W15	13-14	3
Under 13 Men/Women	M13/W13	11-12	2
Masters 1 Men/Women	M1/W1	30-34	4
Masters 2 Men/Women	M2/W2	35-39	4/3
Masters 3 Men/Women	M3/W3	40-44	4/3
Masters 4 Men/Women	M4/W4	45-49	4/3
Masters 5 Men/Women	M5/W5	50-54	4/3
Masters 6 Men/Women	M6/W6	55-59	4/2
Masters 7 Men/Women	M7/W7	60-64	3/2
Masters 8 Men/Women	M8/W8	65-69	3/2
Masters 9 Men/Women	M9/W9	70-74	3/2
Masters 10 Men/Women	M10/W10	75-79	3/2
E Bike Men / Women	EBM / EBW	N/A	4

* Laps may be adjusted as required due to weather and event conditions

Medals / Prizes

Medals will be provided for podium places in each event. No prize money will be offered.

Public Health & Safety

Public Health

Food & Beverages

A range of food and drinks will be available for sale from vendors.

Shelter

Clubs and teams will have a designated area to set up tents for their personal use.

Amenities

Toilets will be available at the village site as per local authority requirements.

Waste Management

Bins will be distributed around the event village and rubbish collection will be arranged.

Public Safety

COVID-19 Management

The event will be run under South Australian COVID safety guidelines as applicable at the time of the event. Recommendations detailed in the latest AMBC COVID Safe Plan will be implemented.

Incident Management

First Aid, Medical and Rescue Services will be provided or arranged by the appointed medical services provider.

Emergency information will be communicated via loudspeaker in the event village. Additional communication with marshals will occur around the course as required.

Evacuation routes are via the Main Gate and Emergency Access Gate outlined in the event location maps.

The designated contact during incident management is the Race Director.

Additional Information

First Aid/Medical Services

The first aid area is located within the main event village. The first aid area will be manned for both official practice and competition. The first aid area will not be manned outside these times.

Water/ Hydration

Potable water will be made available in the event village.

Photographers

An official event photographer will be appointed by the host and various accredited photographers will be roaming throughout the event and venue. Details will be made available after the event.

Race Timers

The event will be timed, recorded, displayed and publicised by AMBC with further display and publication by AusCycling.

Link to live results is available here:

Day 1 = <http://my.raceresult.com/197363/>

Day 2 = <http://my.raceresult.com/197364/>

Anti-Doping Testing

All competitors may be subject to anti-doping testing. Should ASADA wish to attend the event an additional toilet and private area will be provided.

Communications

Primary pre-event communications via the AMBC Website <http://ambc.asn.au/adelaide-xco/>

Event communications will be coordinated from Event Village with competitor and spectator communication via loudspeaker.

Accommodation and Local Amenities

Accommodation and facilities can be found locally within the City of Mitcham and surrounding areas. A few suggestions can be found on the event website: <http://ambc.asn.au/adelaide-xco/>

Adelaide XCO Partners



AMBC Club Sponsors

