



Tech Guide



SA State Championships XCO | Eagle MTB Park

Version 1.0 | Published 10 September 2022



CONTENTS

EVENT DETAILS	2
DATE & TIME	2
EVENT DESCRIPTION	2
EVENT LOCATION	2
EVENT VILLAGE	3
CONTACT DETAILS	3
EVENT SCHEDULE	4
POSTPONEMENT	4
INSURANCE	5
ENTRY AND SIGN-ON	5
COURSE MAP	5
Race Categories	6
MEDALS / PRIZES	6
PUBLIC HEALTH & SAFETY	7
PUBLIC HEALTH	7
FOOD & BEVERAGES	7
SHELTER	7
AMENITIES	7
WASTE MANAGEMENT	7
PUBLIC SAFETY	7
COVID-19 MANAGEMENT	7
INCIDENT MANAGEMENT	7
WATER/ HYDRATION	8
PHOTOGRAPHERS	8
RACE TIMERS	8
ANTI-DOPING TESTING	8
VOLUNTEERS	8
COMMUNICATIONS	8



Event Details

Date & Time

Event Dates:

Competition will be **Sunday 25 September 2022**

Event set up from Friday 23 September 2022 and bump out will be complete by Monday 26 September 2022

Event Times: The current Event Schedule is provided in Appendix B.

Event Description

Adelaide Mountain Bike Club (AMBC) is hosting the **SA State XCO Championships**.

This event will be a Silver level (State Championships) event. The event will be conducted under the [AusCycling Technical Regulations](#).

Details of the event will be advertised on AMBC website and social media:

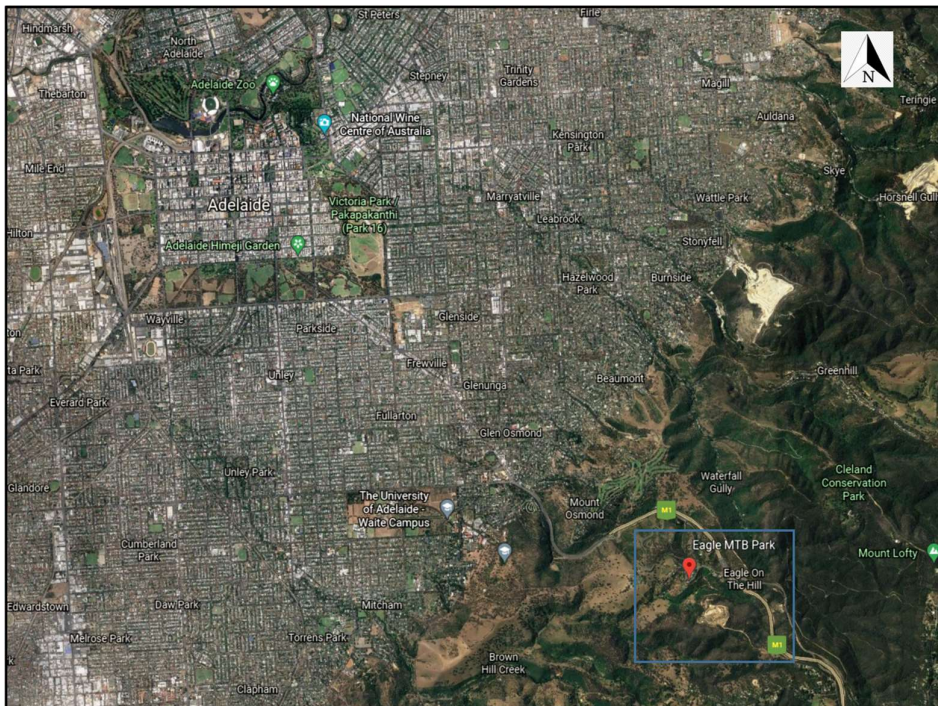
<http://ambc.asn.au/>

<https://www.facebook.com/adelaidemtbclub>

<https://www.instagram.com/adelaidemtbclub/?hl=en>

Event Location

Event Address: Eagle MTB Park – Mt Barker Rd, Leawood Gardens, SA

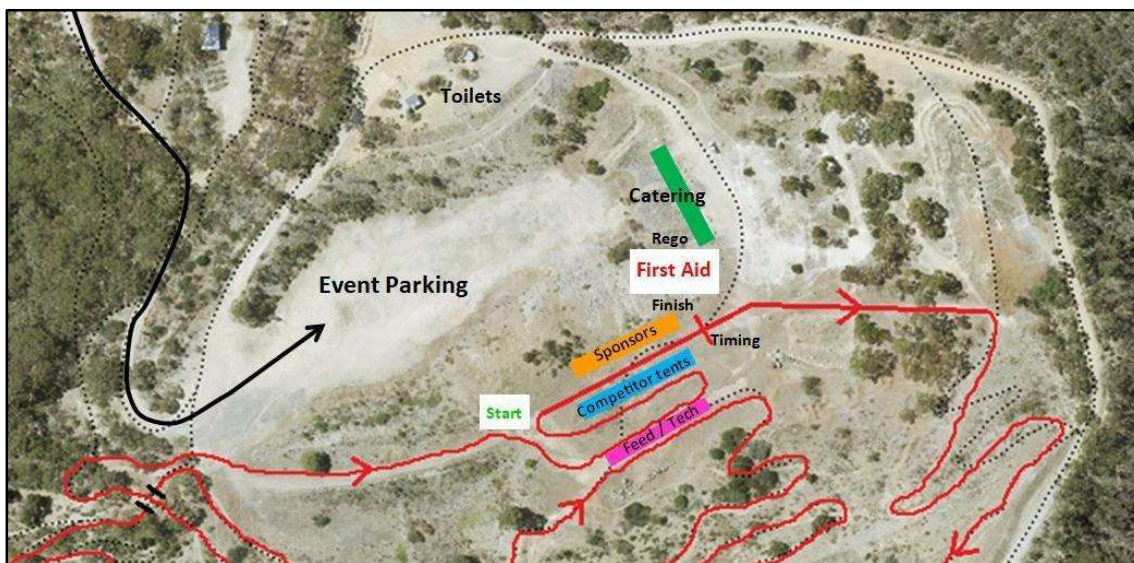


Event Village

Details: Located within Eagle MTB Park. Entry via Mt Barker Road - Event Village is on the mezzanine level within the park.

Rider Transport: There will be no shuttle transport provided during the racing.

Registration: Event registrations will be onsite at the event village. Registrations will be open as outlined in the event schedule (Appendix B)



NOTE: Course not representative of the actual course.

Contact Details

Race Director

Kevin Pullen

racedirector@ambc.asn.au

Club Contact

James Irving

president@ambc.asn.au

AMBC Club Mobile

0408 840 610

AMBC In Case of Emergency (ICE) Mobile

0439 288 334

Entry & Timing Queries

P'An-Tau Jiricek-Scott

timing@ambc.asn.au



Event Schedule

The schedule for the event is outlined in the table below.

Schedule - Sunday 25th September 2022	
Registration	7.30am - 12.00pm
Race 1	8.30am
MM5+, U17M, U15M, U13M	
Presentations - Race 1	
Race 2	10.30am
Elite W, U19W (Junior), MW 1-4, Expert W, U17W, U15W, MW5+, U13W, EBW	
Presentations - Race 2	
Race 3	12.30pm
Elite M, U19M (Junior), MM1-4, Expert M, EBM, SS	
Presentations - Race 3	
Club AGM	2pm (approx)

Postponement

In the case of the local emergency authority issuing a fire or weather warning which requires that the event location is to be evacuated, or SA Health imposing COVID restrictions preventing the event proceeding on the planned dates, then all event activities will be postponed to a date agreed by the event organisers.

Should such an issue arise, the Event Host will issue an advice at least one day prior to postponement.

The Event Host is responsible for communicating the situation to all agencies, including local authorities, the Chief Commissaire, participants and event crews.



Insurance

Both public liability and rider insurance will be provided by AusCycling’s standard insurance policies. A current full AusCycling off-road race license is required for entry.

Entry and Sign-on

Participants are able to enter races in the event through EntryBoss.

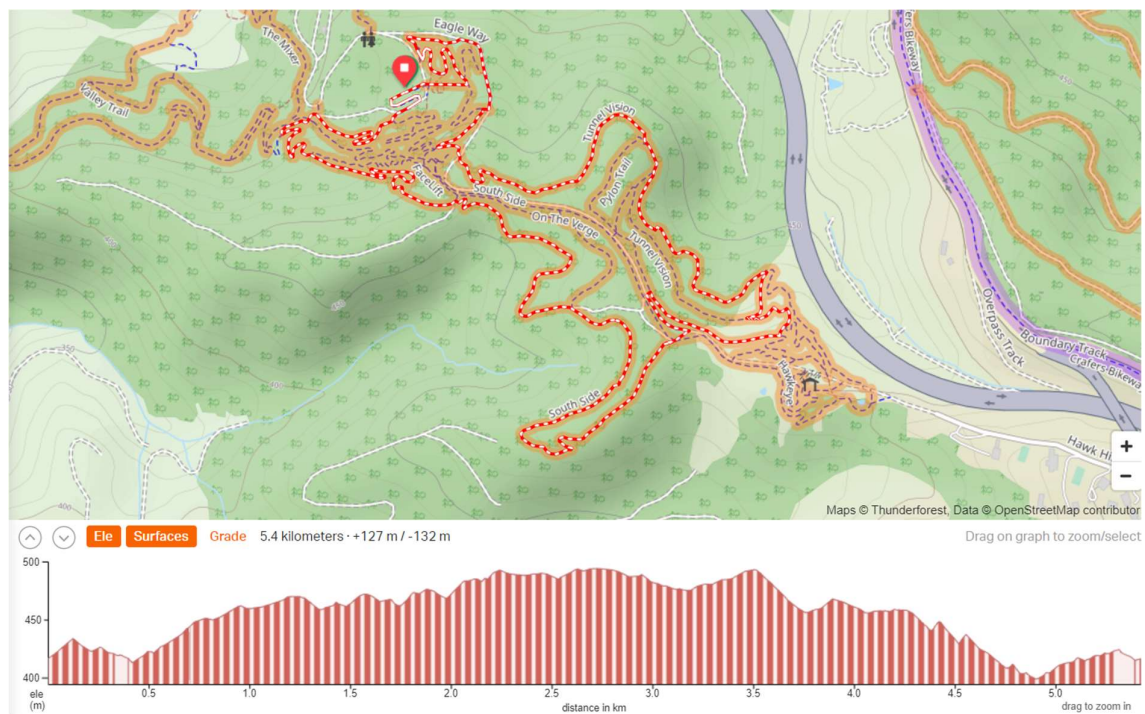
<https://entryboss.cc/races/12481/entries/new>

There will be no on the day entries. The operation hours of registration are outlined in the Event Schedule (See Appendix B). The Registration Office will also be utilised for the distribution of race plates.

Course Map

Proposed course below. Course is subject to change.

<https://ridewithgps.com/routes/40442215>



Race Categories

Category	Code	Age	Laps*
Elite Men/Women	ME/WE	19>	6/5
Expert Men/Women	MX/WX	19-29	4/3
Junior Men/Women (U19)	MJ/WJ	17-18	5/4
Under 17 Men/Women	M17/W17	15-16	4/3
Under 15 Men/Women	M15/W15	13-14	3/2
Under 13 Men/Women	M13/W13	11-12	2
Masters 1 Men/Women	M1/W1	30-34	4/3
Masters 2 Men/Women	M2/W2	35-39	4/3
Masters 3 Men/Women	M3/W3	40-44	4/3
Masters 4 Men/Women	M4/W4	45-49	4/3
Masters 5 Men/Women	M5/W5	50-54	4/2
Masters 6 Men/Women	M6/W6	55-59	4/2
Masters 7 Men/Women	M7/W7	60-64	3/2
Masters 8 Men/Women	M8/W8	65-69	3/2
Masters 9 Men/Women	M9/W9	70-74	3/2
Masters 10 Men/Women	M10/W10	75-79	3/2
Single Speed (non- championship)	SS	Open	4
E Bikes Men / Women (non-championship)	EBM/EBW	Open	5/4

*Refer to Entryboss for latest information. Laps may be adjusted due to weather and event conditions.

Medals / Prizes

Medals will be presented for podium finishers in each category.

In addition to medals some prizes will be provided by our sponsors.

No prize money will be offered.



Public Health & Safety

Public Health

Food & Beverages

A range of food and drinks will be available for sale from vendors.

Shelter

Clubs and teams will have a designated area to set up tents for their personal use.

Amenities

Toilets will be available at the village site as per local authority requirements.

Waste Management

Bins will be distributed around the event village and rubbish collection will be arranged.

Public Safety

COVID-19 Management

The event will be run under South Australian COVID safety guidelines as applicable at the time of the event.

Incident Management

First Aid, Medical and Rescue Services will be provided or arranged by the appointed medical services provider.

Emergency information will be communicated via loudspeaker in the event village. Additional communication with marshals will occur around the course as required.

Evacuation routes are via the Main Gate and Emergency Access Gate outlined in the event location maps.

The designated contact during incident management is the Race Director.



Water/ Hydration

Potable water will be made available in the event village.

Photographers

An official event photographer will be appointed by the host and various accredited photographers will be roaming throughout the event and venue.

Race Timers

The event will be timed, recorded, displayed and publicised by AMBC with further display and publication by AusCycling.

Link to live results are available here: <https://my.raceresult.com/216727/>

Anti-Doping Testing

All competitors may be subject to anti-doping testing. Should ASADA wish to attend the event an additional toilet and private area will be provided.

Volunteers

Volunteers from AMBC, as well as the general public, have been identified and will be assigned roles for the event eg. Course Marshalls .Volunteers will be managed by the designated Race Director and AMBC Committee..

Communications

Primary pre-event communications via the AMBC Facebook Page

<https://www.facebook.com/adelaidentbclub/>

The event will use handset UHF radios for the majority of communications. Communication with remote marshals may require use of mobile phones. Mobile phone coverage is available throughout the park and will be coordinated with the Race Director.

Event communications will be coordinated from Event Village. This will include communications with the first aid, commissaires, timekeeping and specific marshal locations.

Come. Race. Smile.

